

## High Performance Smooth flooring

### DESCRIPTION:

GRANITO FLOOR is special leveling compound with high performance for abrasion resistant flooring.

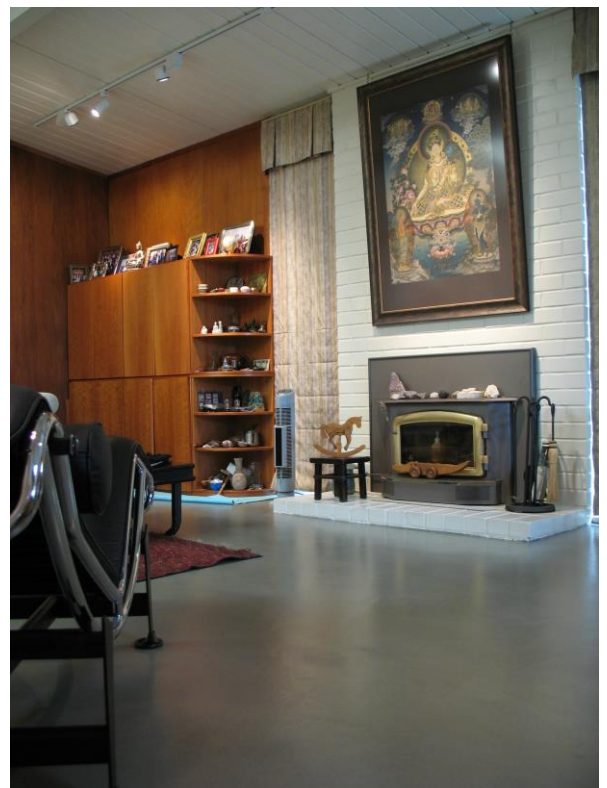
#### **Where to Use:**

- Shows high performance indoors and outdoors with **AZ-SuperTop** sealer.
- In hospitals, shopping centers, schools, offices, showrooms, rest rooms and areas where rubber-wheeled vehicles are in use.
- For levelling and smoothing new or existing concrete, marble, and ceramic substrates,
- Over old polished or stamped concrete surfaces.
- Abrasion-resistant floors on concrete, old terrazzo, ceramic tiles and natural stones.
- Terrazzo, inside homes, offices, shops, museums, theatres and exhibition halls when used in combination with natural aggregates.

### Features & Benerfits:

- Special hydraulic binders based, self-levelling and quick drying properties.
- Durable for furniture and wheelchairs load resistances.
- No cracking even for the very thin layers applications.
- Create flooring with an exclusive, original finish which is quick and easy to install
- Moreover, it has excellent adhesion to the layer.
- High level of compressive and flexural strength,
- Bonds perfectly to the substrate and thanks to its special composition,

- Dries quickly so that any further finishing coats may be applied after a very short time.
- Approximately 1 day after application, GRANITOP FLOOR can be dry-polished using diamond grinding disks to get a shiny, reflective or similar finish on natural stone.



### SURFACE PREPARATION:

The surface should be sound, free of dust, dry, clean and strong enough to support the weight. Any oil, grease, rust, gypsum, wax, paint residues, loose particles on the surface should be removed. The joints, cracks etc. should be repaired prior to the application. Concrete and/or ceramic or natural stone surfaces must be prepared by shot-blasting or milling and primed with GRANITOP Primer and, where required, reinforced with Glass fiber mesh.

## High Performance Smooth flooring

### Mixing:

Pour the content of a bag of GRANITOP into a container with 5,0 to 6,0 liters of clean water and mix with a low-speed electric mixer until a smooth, flowable, lump-free mix is formed. Let it stand for 2 – 3 minutes and before applying, remix the blend for a few minutes more. Prepare only the amount of GRANITOP that will be applied within 15 minutes at a temperature of +23°C. The pot life of the mix varies according to the temperature and is reduced as the temperature increases. If GRANITOP is to be applied on medium to large-sized surfaces, larger quantities may be prepared using a vertical-shaft mixer. Mix the product until the blend is completely homogenous before applying.



### APPLICATION:

Spread GRANITOP by hand in a single layer of 3 to 20 mm for a natural finish, or at a thickness between 10 – 30 mm if the floor is to be polished. Make sure the material is cast in a regular, continuous flow without interruptions, to avoid defects in flatness and particularly visible differences in color. Thanks to its self-levelling properties, GRANITOP eliminates all imperfections left by the spreader. When applying the product, respect the expansion joints in the substrate and form control joints at least every 50 m<sup>2</sup>. Seal joints with a single component, thixotropic polyurethane sealant and adhesive with a low modulus of elasticity for sealing expansion and distribution joints.

If a polished look is desired, Dry-polishing with a diamond-tipped grinder may be carried out 1 day after applying the product. The surface obtained will be

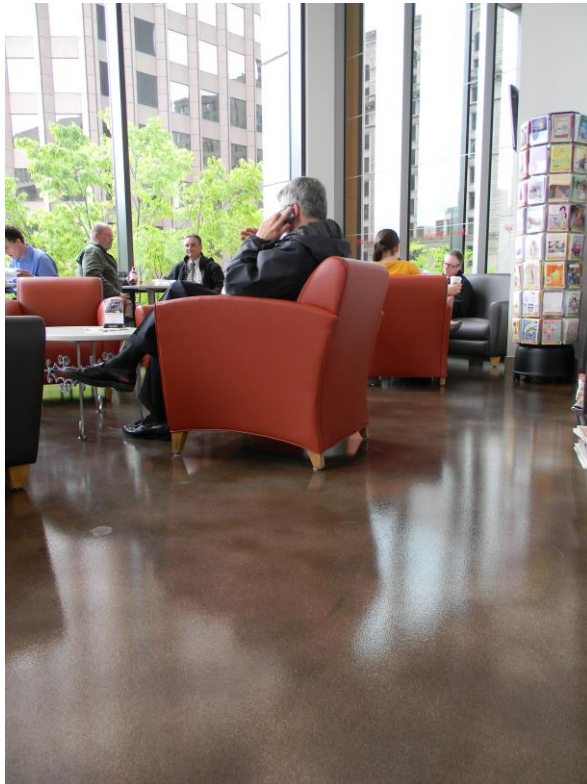
completely smooth and shiny, which reflects light, very similar to natural stone such as granite. Complete the polishing operations using the appropriate tools and then finish off the surface by applying a glossy or mat sealer. For best results, it is recommended that floor traffic remain off the finished surface for 24 hours after application depending on drying conditions. For heavy foot traffic, allow 72 hours for curing.

### PRECAUTIONS:

- Do not add more water to the mix once GRANITOP starts to set.
- Do not add lime, cement, gypsum or other binders to the GRANITOP mix.
- Do not spread GRANITOP on unprimed surfaces.

## High Performance Smooth flooring

- Do not use GRANITOP on substrates which are subject to rising dampness. or on wet surfaces.
- Do not use GRANITOP on metallic surfaces.
- Do not use GRANITOP at temperatures lower than +10°C or higher than +35°C.
- GRANITOP floors are not always uniform, a typical feature of cement-based products.



Manufactured by TEKNO exclusively for TopCrete International SARL.

