

POLYMER MODIFIED MICROTOP CONCRETE TOPPING

Introduction

The **GRANITOP-M** System is a cement based polymer modified high performance MicroTopping concrete overlayment system designed to be used as a floor topping for pedestrian areas.

Where to use

GRANITOP-M is used as a hard-wearing overlay system on existing floors where a strong and smooth concrete finish is desired. Granitop-M therefore eliminates the need to remove existing concrete slabs, while providing an attractive and durable micro thickness concrete finish. **GRANITOP-M** can be integrally colored and may also be chemically stained for additional antiquing effects. Adding different color fine aggregates to **GRANITOP-M** will provide a stronger mix and a non-slip surface.



Features & Benefits

- Dry to foot traffic after 12 hours.
- Resistant to abrasion.
- Perfect bonding to concrete substrates.
- Can be applied in wide areas.
- Shrinkage compensation system
- provides longterm dimensional stability.
- Resistant to water and freeze thaw cycles.

Limitations

GRANITOP-M must be applied over structurally sound and non-moving surfaces. All joints in the existing substrate must be extended through the full depth of the **GRANITOP-M** overlay by saw cutting , allowing for the simultaneous expansion and contraction of the substrate and the **GRANITOP-M** overlay.

Cracks or joints in the existing substrate may reflect through the **GRANITOP-M** System. As in all flooring applications, the surface must be sealed for stain protection once the surface has cured for a minimum of 24 hours . If the **GRANITOP-M** topping is to be chemically stained, it must be allowed to cure for a minimum of seven days prior to staining.

GRANITOP-M is designed to allow aggregates to be added to the mix to provide a granulated finish. Do not apply in areas subject to negative hydrostatic pressure or metal-wheeled vehicular traffic. Do not apply if ambient temperature is expected to drop below 7°C during installation or in the proceeding 48 hours, or if rain is expected in the 24 hour period after application. Do not mix or apply when ambient temperature exceeds 40°C.

Granitop-M

POLYMER MODIFIED MICROTOP CONCRETE TOPPING

Substrate Preparation

All bases must be fully cured, sufficiently rigid, and clean of any surface contamination such as oil, dirt, grease, coatings, curing compounds, and laitance that may prevent good adhesion.

Dense, smooth surfaces, and those retaining excessive amount of form release agent can cause delamination from the base. Any painted or coated surfaces should be sandblasted, grinded, and/or pressure washed to remove existing coatings. Use of detergents or soap is not recommended as they may leave a film that can cause bonding failure.



Surrounding areas should be covered and protected from material spills and equipment contact. Rope off work area. Cracks should be filled with a patching compound such as Crack Filler. However, it should be noted that some cracks might be moving cracks and could therefore cause reflective cracking in the **GRANITOP-M** thin layer. Any surface

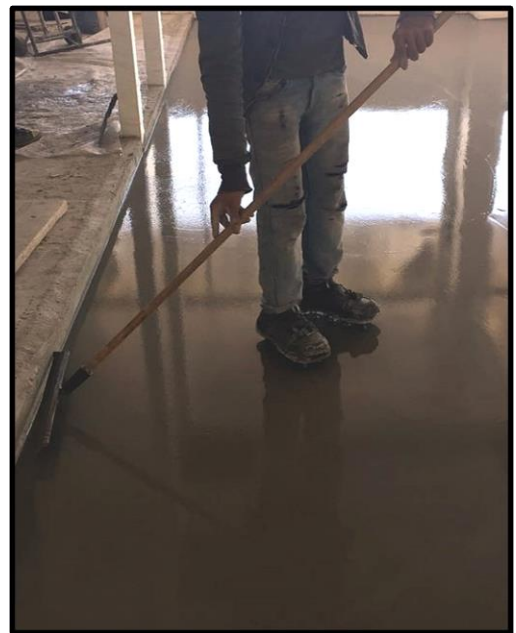
imperfections or holes should be patched with a Patching Compound and allowed to cure for a minimum of 24 hours.

Mixing

Mixing should be done with a drill mounted jiffy-type mixer at low speeds. Always add clean potable water first. Mixing duration should last for at least four minutes to insure proper color and material dispersion within mix.

Application

Application temperatures should be between 5°C and 40°C. **GRANITOP-M**



can be applied in thicknesses ranging from featheredge to 10 mm. A minimum application thickness of 2 mm is recommended. Use a gauge rake spreader to place the material, then follow lightly with a trowel depending on the desired final look. Do not over trowel. All mixed material must be used immediately. Timing is critical for proper spreading of the surface. Drying & curing time is 4-6

Granitop-M

POLYMER MODIFIED MICROTOP CONCRETE TOPPING

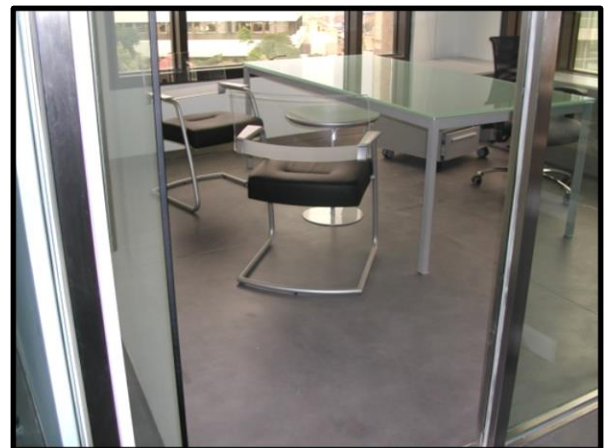
hours depending on prevailing temperatures and humidity. Longer curing time would be required under cooler temperatures and more humid conditions. The surface should be allowed to fully dry before application of a sealer coat. Control joints may be saw-cut into the topping after it has been allowed to cure for at least 12 hours.

Curing

Do not water cure . **GRANITOP-M** is self curing. Floor fully cures in about 16 hours after installation at 21°C, and the surface may be opened to light foot traffic at least 72 hours after installation. Area may be opened to regular traffic seven days after installation depending on prevailing site conditions.

Coverage

Coverage will vary depending on substrate surface profile, required depth of installation, surface finish and preparation method. Typical coverage rate is approximately 5 square meters per 35 kg bag at 10 mm thicknesses.



Colors

GRANITOP-M is available in cement grey and white colors. However, custom color packs are available upon request.